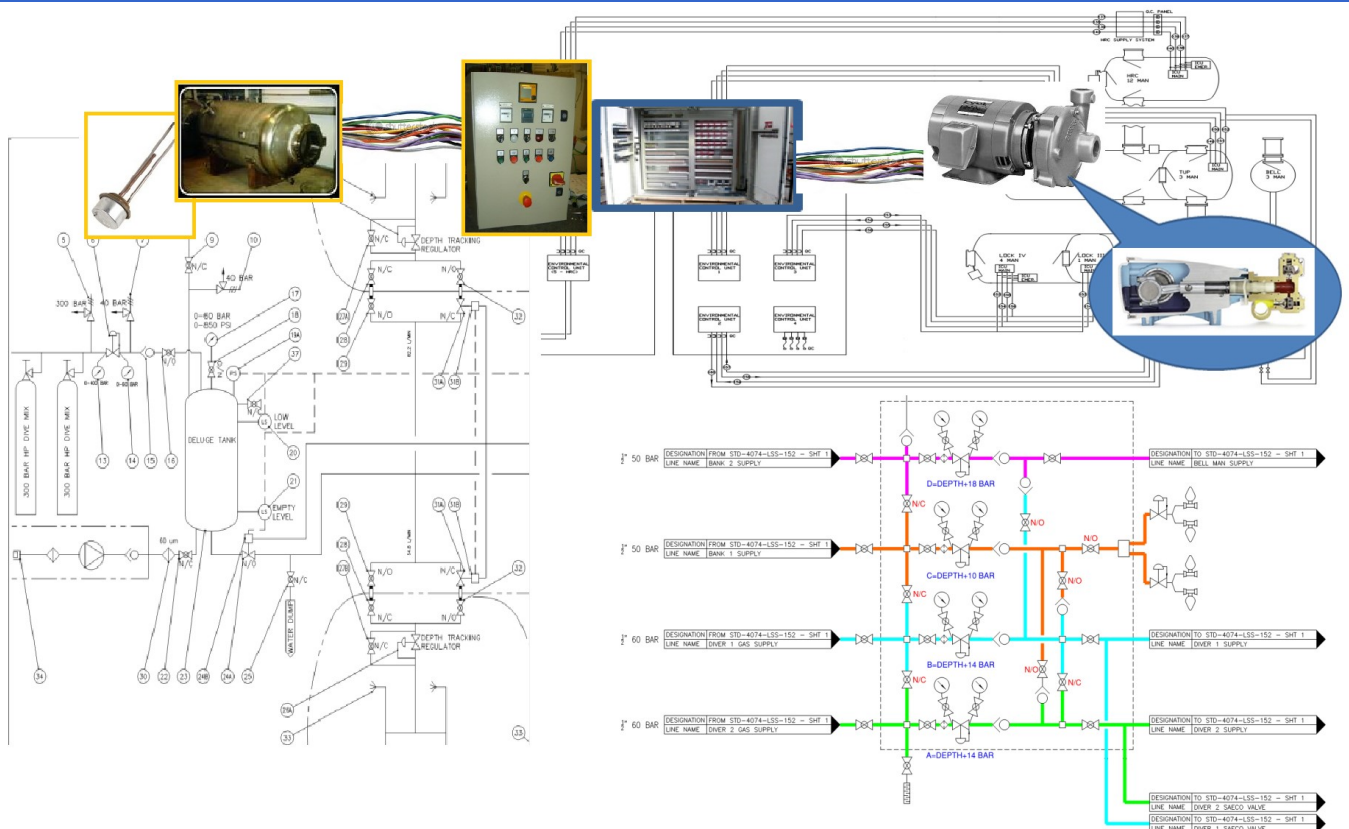


Failure Mode, Effects and Criticality Analysis



IDENTIFYING REDUNDANCY AND RELATIONSHIPS

Course Overview

This intensive two-day course will introduce industry personnel to the principles of Failure Mode, Effects and Criticality Analysis processes. This will include a comprehensive review and discussion of what is meant by FMEA and FMECA, the essential components, suggested level of detail, scope, complexity and options for the analysis. The course will further delve into areas of analysis, with the risk assessment and residual risk being ranked against set criteria.

An outline of the current diving industry stance from, Class, IOGP and IMCA's as well as their similarities and differences. A great emphasis on the use of the process along with other diving system assurance tools; however it is to take note that the formula for a successful FMEA/FMECA is the same for other equipment such as ROV's, Ships, Cranes etc. Making the document readable, live and above all useful is the aim of the process and subsequently the aim of this course.

In providing a detailed understanding of the FMEA/FMECA structure and the methodology of conducting the process, it is aimed at enabling course candidates to consider their role in the team or organisational structure involved in the creation of a FMEA/FMECA report.

Course Objectives

To enable course delegates to understand the methodology, protocols, scope, complexity and expectations required in the FMEA/FMECA process along with its place in the assurance tools process.

Course Content

- What is an FMEA/FMECA?
- Why should there be an FMEA/FMECA carried out on diving systems?
- What does the FMEA/FMECA process consist of and is there an exact scope?
- What are the benefits of implementing the FMEA/FMECA, making it a live, accessible, updatable and readable document?
- Who conducts the FMEA/FMECA and what commitment is required from all parties?

Failure Mode, Effects and Criticality Analysis

Course Content (continued)

- > The Role of the Assurance Team
 - Planning & Preparation for the FMEA/FMECA process
 - Identifying the scope, complexity and depth of the analysis
 - Identifying the acceptance criteria
 - Identifying and conducting the system / equipment test
 - Standard assumptions
 - The FMEA/FMECA on the PLC's in Diving systems
- The FMEA/FMECA Report

Who Should Attend

There are a number of interested parties that would benefit from attendance of this course. From the procurement of goods and services to the practitioners, engineers, supervisors etc. The course covers a technical field but is focused on the process rather than the individual ability to perform technical tasks and for this reason, the conceptual understanding can be widely understood.

Course Assessment and Certification

Delegates who have successfully completed and passed the examination or assessment will be awarded with KBA Training competency certificate.

For more information, contact us at:

**No. 15 Changi North Street 1
#02-36 I-Lofts @ Changi Singapore 498765
Tel: +65 6542 4984 | Fax: +65 6542 5584
Email: courses@kbatraining.org | Website: www.kbatraining.org**

